

How to install SolidWorks

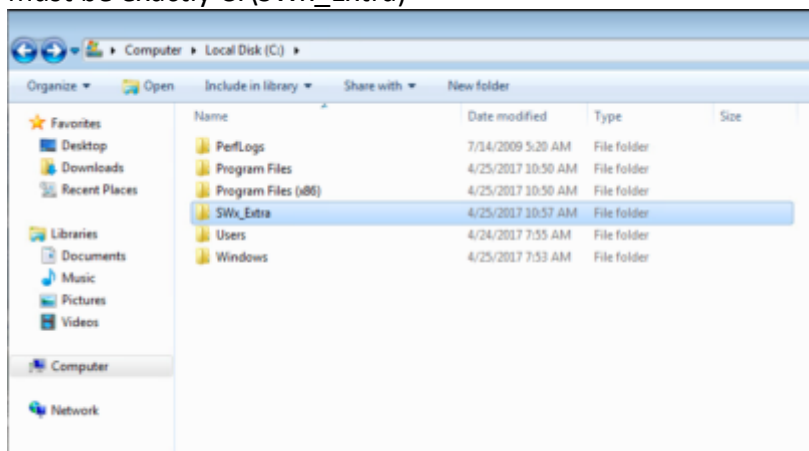
The SolidWorks installation files are located on our exchange-folder ([//172.25.250.112/exchange/_SolidWorks2016](http://172.25.250.112/exchange/_SolidWorks2016) (for internal access) and on our ftp-server (for CIN-external access). For using ftp-server download the files with your browser using this link <ftp://cin-11.medizin.uni-tuebingen.de:10021> or better use a ftp-client like FileZilla for downloading.

Username swxworks

Password Sol!DWORX5

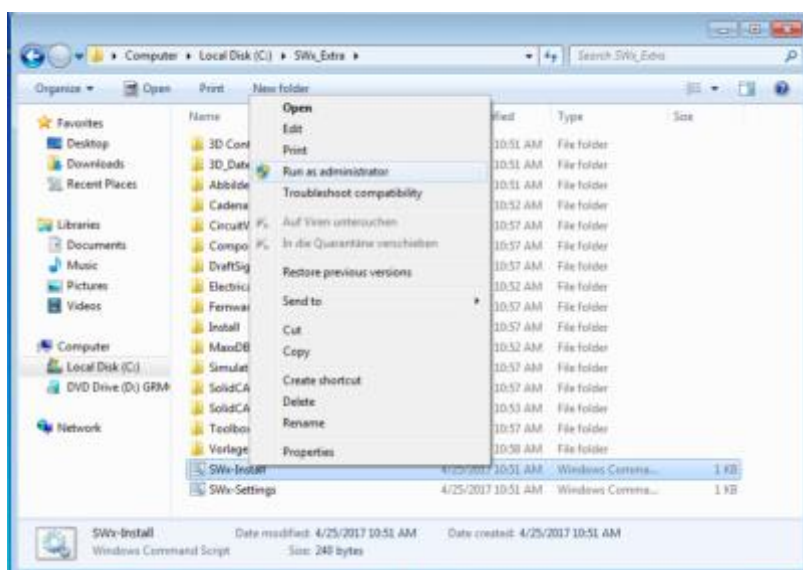
The download will take about app. 10-60 minutes, depending on the speed of your internet connection.

Please copy the complete directory SWx_Extra to the Root of your C-Drive (targets name must be exactly C:\SWx_Extra)

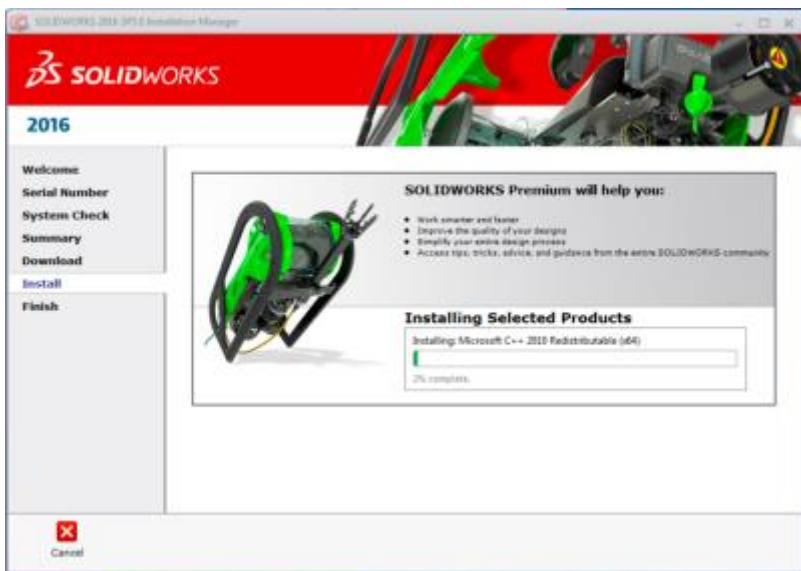
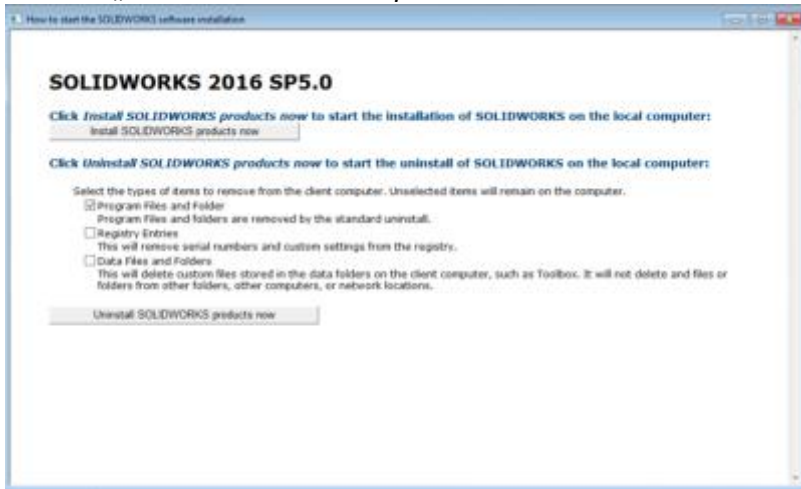


After copying the folder take care that you do have administration rights and deactivate your antivirus-software during this installation.

Go to C:\SWx_Extra and run SWx-Install.cmd, please use right click and „run as administrator“

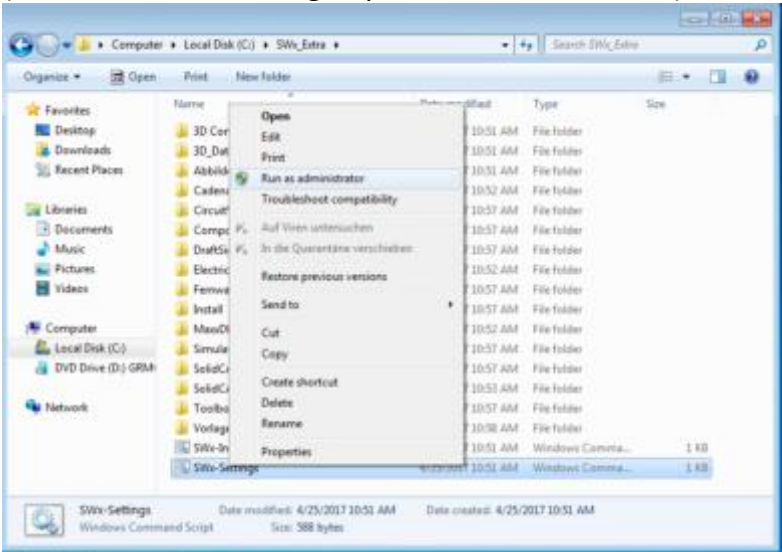


Click on „Install SOLIDWORKS product now“.



It will take app 45 minutes of installation time, the Solidworks-windows closes automatically when finished.

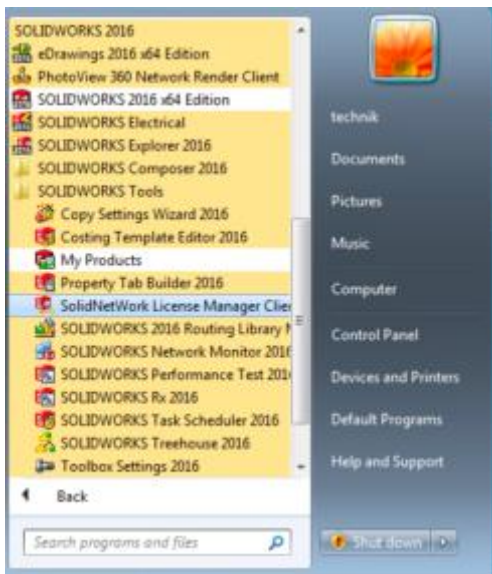
Now run C:\SWx_Extra\SWx-Settings.cmd by using right-click and „run as administrator“ (this will insert some registry entries for SolidWorks).

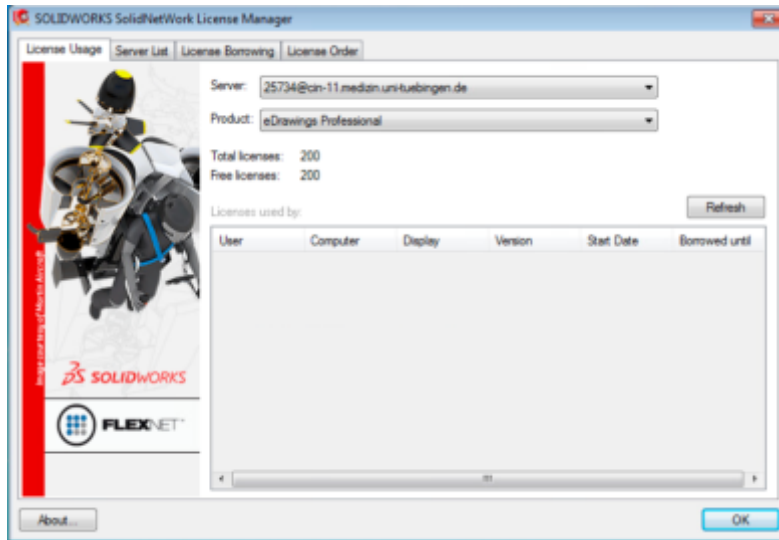


Congratulation - the installation is finished and you can start „SOLIDWORKS 2016 x64 Edition“.



To run Solidworks you have to be connected to our CIN network or to Hertie network. It is possible to book out from the license server for a limited time (30 days maximum) by using the SolidNetWork License Manager:





Click on tab „License Borrowing“, select your product and the date until you like to borrow (maximum 30 days) and click on „borrow“

